



Refresh Guide



Set Up Date: NOW



Set Up Date: NOW



Set Up Date: October 24th



Set Up Date: NOW

Table of Contents

Description	Page Number
Materials Included	3-4
MSN Refresh (setup now)	5-11
Windows XP (setup now)	12-13
Compaq 3C Refresh (setup Oct. 24th)	14-17
Inkjet Cartridge Spinner	18
Home Networking	19-20

Are you missing POP materials or have questions?
We've got the answers!

Missing POP	Circulation	817-415-POP2
Setup of POP	Brandy Smith	817-415-3994
Microsoft Internet Center	MSN Help	1-700-MSN-HELP
Windows XP Software	Jimmy Mansker	817-415-0274
Compaq Demonstrator Problems	Compaq Support	1-888-215-8890
Planograms*	FaxBack	1-800-323-6586

*Planograms are also available on RSOL.

Included Materials



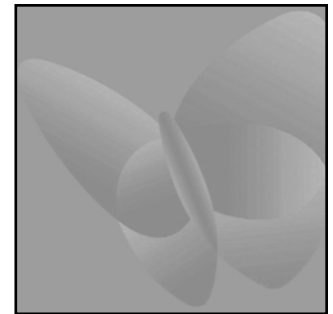
Broadband 20x20 (One)



Dial Up 20x20 (One)



MSN and RadioShack 20x20 (One)



Butterfly 20x20 (One)



Digital Camera Circle Sign (Two)



iPAQ Circle Sign (Two)



MP3 Circle Sign (Two)



Hardware 20x17 (One)



Dial-Up Flag Sign (One)



Broadband Flag Sign (One)

Brochures LIT-401

Image Not Available

Demo CD
(Refer to the instructions included with the CD)

At time of print, these items had not been confirmed to be shipping in this kit.



Dial-Up Monitor Bezel (One)



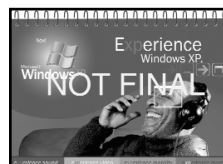
Broadband Monitor Bezel (One)



Windows XP Monitor Corner Cling (Two)



Windows XP Twist POP (Two)



Windows XP Flip Guide (One)



Windows XP Tag Violator (One)

Included Materials

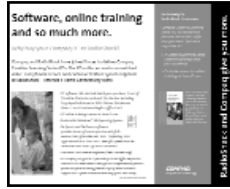
COMPAQ



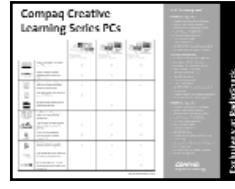
CLS Pricing Sign (One)



BFY Pricing Sign (One)



"Give You More" Tablefront Sign (Two) CPQ-992



"Exclusively at RS" Tablefront Sign (Two) CPQ-991



"Presario 5301" Tablefront Sign (Two) CPQ-993



"Compaq Connects Your World" Tablefront Sign (Two) CPQ-994



"Presario 5302" Tablefront Sign (Two) CPQ-995



"Building Your Own Network is Easier" Tablefront Sign (Two) CPQ-996



"Order Compaq Products Here" Tablefront Sign (Two) CPQ-998



"Presario 5322" Tablefront Sign (Two) CPQ-997



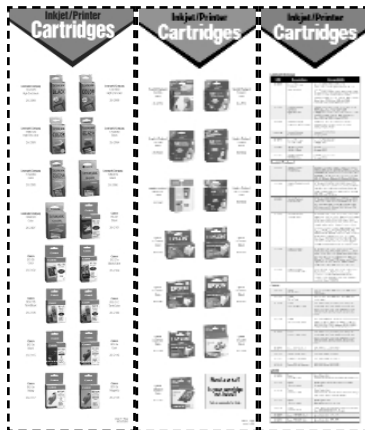
CLS Brochures (3 pks of 15) CPQ-971



Credit Offer Sign (Two)



Channel Strip (Two) CPQ-1040



Inkjet Trifold Spinner with String (One)



Home Plug (18x2) Shelf Talker (One)



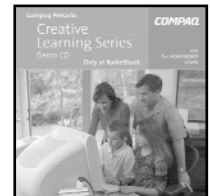
Wireless (18x 2) Shelf Taker (One)



Ethernet (18x2) Shelf Talker (One)



CLS Demo CD (One) CPQ-955



Home Networking (48x12) Canopy Sign (One)

msn™

Refresh Setup Now

Setup the new POP and brochures NOW. Your DSMs will be checking to make sure that all materials are up by October 24th, the date of the Broadband launch.

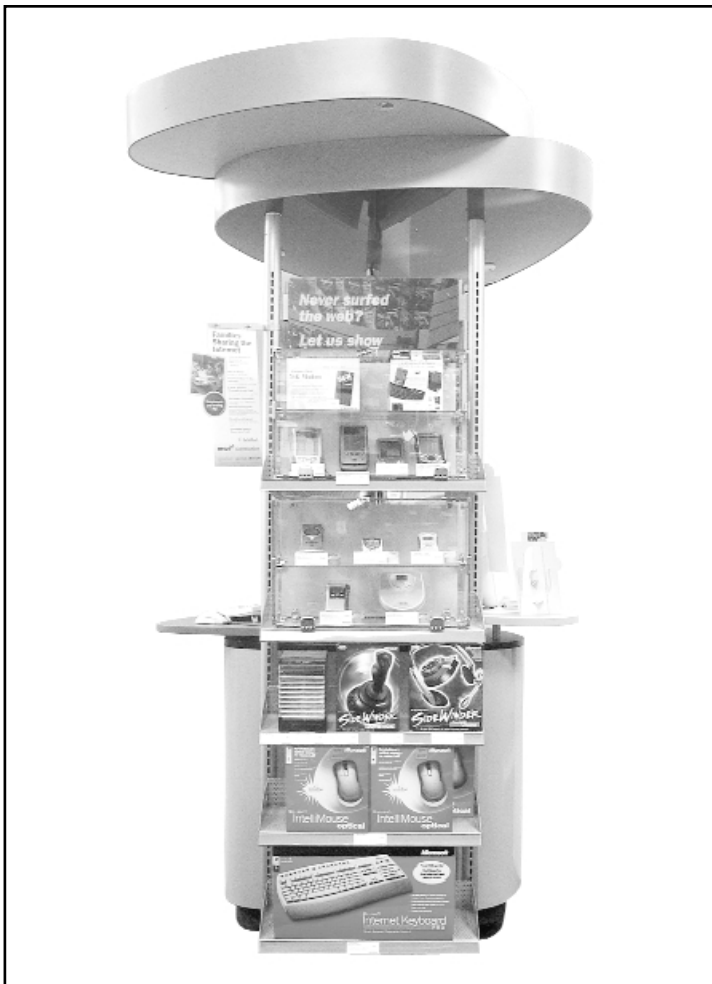
There are now three possible Microsoft Internet Center configurations. The type of MSN service your store can sell will determine what signage your store will display.

Stores with **Broadband** will follow the POP set up on **pages 6 and 7**.

*Stores with **Dial-Up only** will follow the POP set up on **pages 8 and 9**.

*Stores with **no Local Access** will follow the POP set up on **pages 10 and 11**.

**MSN is always expanding their Dial-Up and Broadband coverage. Place the extra signs from this kit back in the box, so that in the event that coverage is expanded to your area, you will be able to set up the appropriate signs.*



Some stores have now received the new **Handheld PC and/or the MP3 Player display cases**. This will also determine what signage you are to put on the Microsoft Internet Center in Broadband stores only.

FaxBack Documents:

65999 Microsoft Internet Center with HHPC and MP3 Display

66000 Microsoft Internet Center with MP3 Display

59784 Microsoft Internet Center (Floor and Wall)

msn™

Broadband Stores

Left Side

Front



Broadband 20x20



Dial-Up 20x20



Use the Dial-Up Monitor Bezel sign if you have a second MSN monitor.



MSN Circle Signs



MSN 20x17 Hardware Sign:

If you do not have a second MSN monitor, then place this MSN Hardware sign in the sign holder under the 20x20 sign on the left side of the Internet center. Do not place any merchandise on this shelf except the Internet Appliance (260-0813 or 260-0814) as shown above.



Place the new MSN Take-A-Disks (25-5069) in the Take-A-Disk holder (DSP-0005)



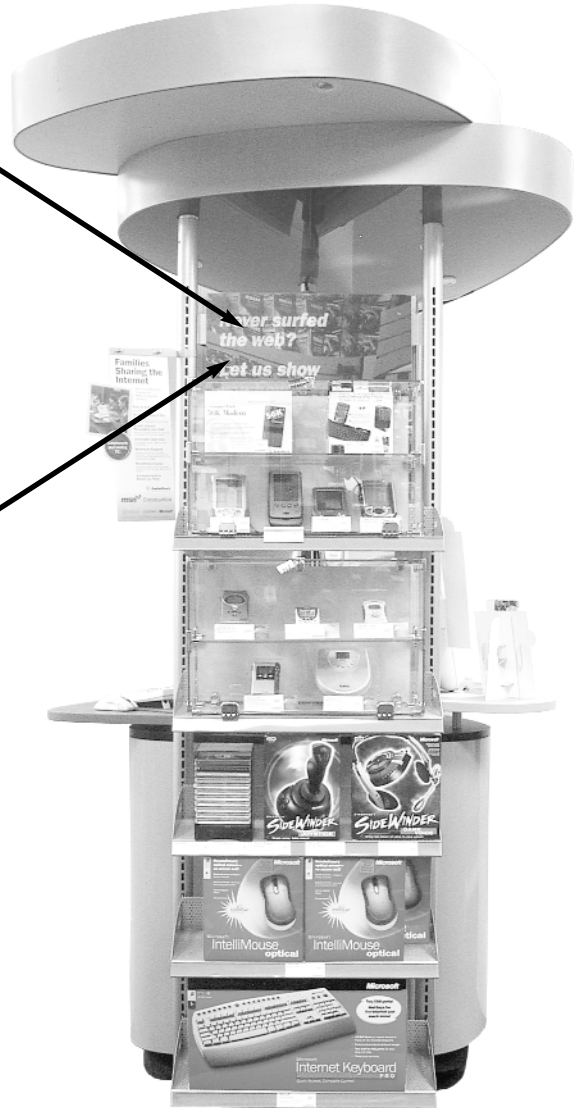
MSN Brochures (LIT-401)



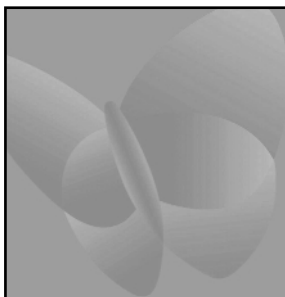
Broadband Stores

Right Side

Side



MSN and RadioShack 20x20: If you do not have the HHPC and/or the MP3 display cases place this sign in the 20x20 sign holder .



Yellow Butterfly 20x20: Use this sign if you have the HHPC and/or MP3 display cases. Place this sign in the 20x20 sign holder.



Broadband Flag Sign



Broadband Monitor Bezel

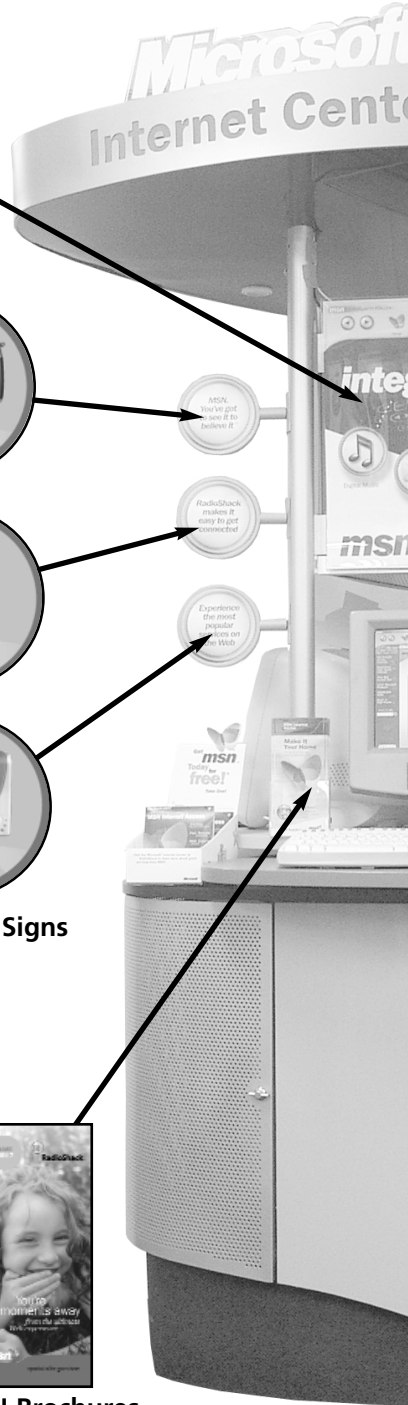
Microsoft Planograms:

- 65999 Microsoft Internet Center with HHPC and MP3 Display
- 66000 Microsoft Internet Center with MP3 Display
- 59784 Microsoft Internet Center (Floor and Wall)

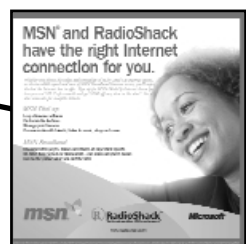
msn™ Dial-Up Stores

Left Side

Front



Dial-Up 20x20



MSN and RadioShack 20x20



Use the Broadband Monitor Bezel if you have a second MSN monitor.



MSN Circle Signs



MSN 20x17 Hardware Sign:
If you do not have a second MSN monitor, then place this MSN Hardware sign in the sign holder under the 20x20 sign on the left side of the Internet center. Do not place any merchandise on this shelf except the Internet Appliance (260-0813 or 260-0814) as shown above.



Place the new MSN Take-A-Disks (25-5069) in the Take-A-Disk holder (DSP-0005)

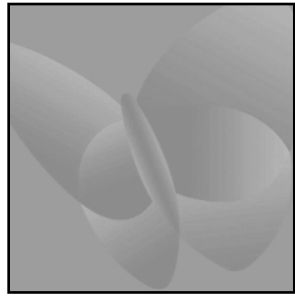


MSN Brochures (LIT-401)

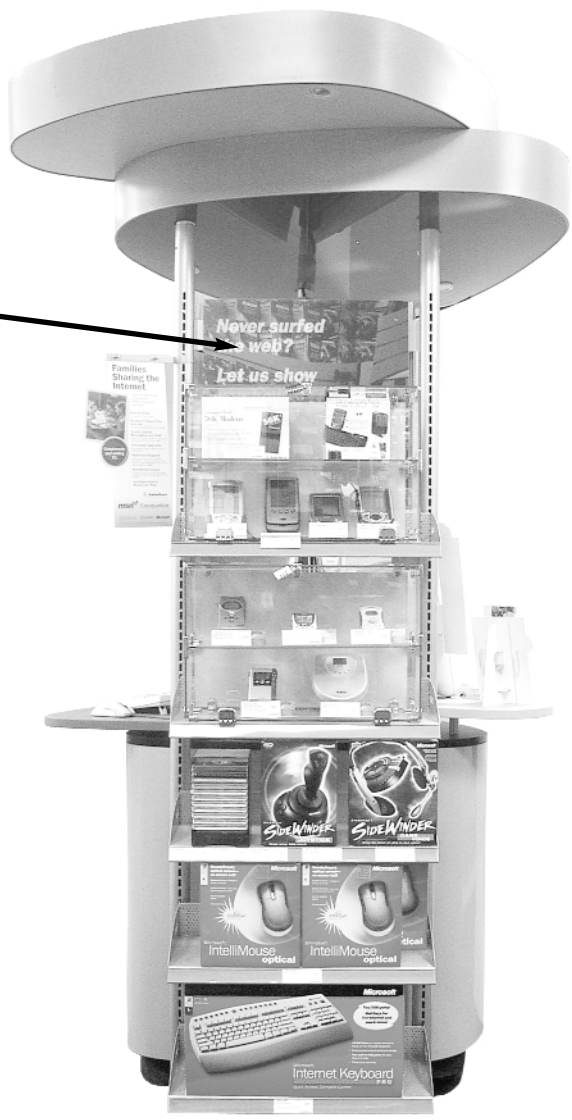
msn™ Dial-Up Stores

Side

Right Side



**Yellow Butterfly
20x20**



**Dial-Up
Flag Sign**



**Dial-Up
Monitor Bezel**

- Microsoft Planograms:**
- 65999 Microsoft Internet Center with HHPG and MP3 Display
 - 66000 Microsoft Internet Center with MP3 Display
 - 59784 Microsoft Internet Center (Floor and Wall)



No Local Access Stores Left Side



Keep this 20x20 sign. If you need this sign contact Circulation and ask for the "Access the Internet anywhere" 20x20 MSN sign from the July Refresh.



Keep the existing Monitor Bezel sign.



MSN 20x17 Hardware Sign:

If you do not have a second MSN monitor, then place this MSN Hardware sign in the sign holder under the 20x20 sign on the left side of the Internet center. Do not place any merchandise on this shelf except the Internet Appliance (260-0813 or 260-0814) as shown above.



Place the new **MSN Take-A-Disks (25-5069)** in the Take-A-Disk holder (**DSP-0005**)



MSN Brochures (LIT-401)



MSN and RadioShack 20x20



MSN Circle Signs

Front

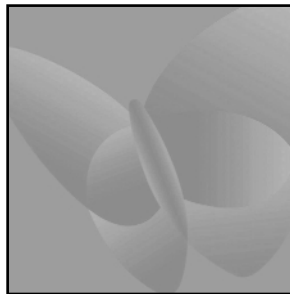




No Local Access Stores

Right Side

Side



**Yellow Butterfly
20x20**



**Dial-Up
Flag Sign**



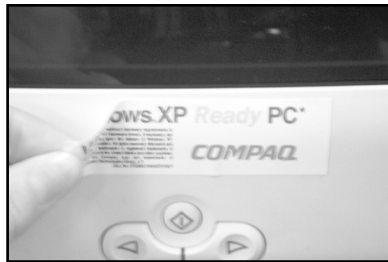
**Keep the
existing
Monitor Bezel
sign.**



Microsoft Planograms:

- 65999 Microsoft Internet Center with HHPG and MP3 Display
- 66000 Microsoft Internet Center with MP3 Display
- 59784 Microsoft Internet Center (Floor and Wall)

msn[™] xp Launch Oct. 25th



Remove the existing Windows "XP Ready" sticker from the Compaq monitors.



Clean the Compaq monitors..



Window XP monitor cling

Place the Windows XP monitor clings in the upper right corner of each Compaq monitor.



Attach the adhesive end of the Windows XP twist pop to the top left corner of each Compaq monitor.

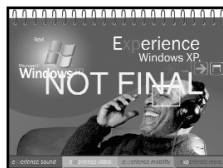
msn[™] xp

Launch Oct. 25th

The official launch of Windows XP is October 25th. The software will be available on RS.com (**950-1348 Windows XP, 950-1349 Professional Windows XP, and 950-1381 Windows XP Plus**). The Compaq 3C computers and BFY computers now have this software preinstalled. Windows XP should also be recommended with the sign up of every MSN Broadband customer. All though we do not stock Windows XP, many of our products can be enhanced with the use of Windows XP. So sell the benefits of Windows XP to every customer.

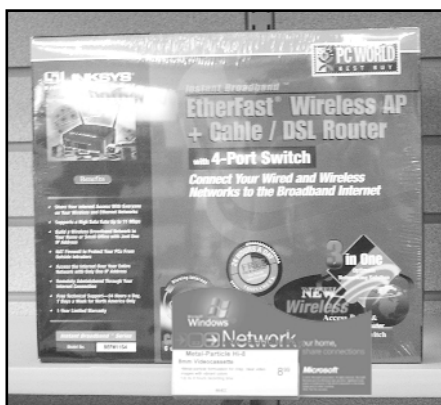
Window XP Flip Guide:

This guide is for the associate as well as the customer. It explains the benefits of having Windows XP. Place this guide on the Internet Center for quick reference.



Window XP Tag violator:

This violator should be placed on merchandise where the use of that merchandise can be enhanced with Windows XP. Below are some examples of such products. Place the violator behind the products fact tag.



Wireless Networking Products:
 250-3024 802.11B AP Router
 250-3022 802.11B USB Adapter
 250-3023 802.11B PCMCIA Adapter



CD-RW Products:
 250-3043 iOMEGA CD-RW External Drive
 250-3049 Internal CD-RW Drive
 250-3052 External USB CD-RW Drive

COMPAQ

3C Refresh Oct. 24th

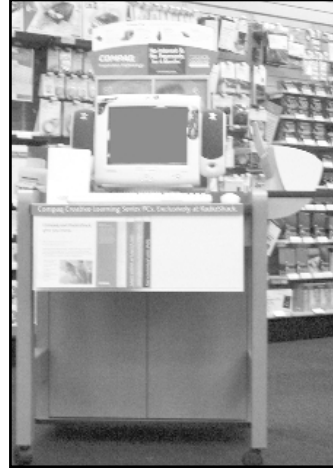
Compaq Hardware List

One Table Store



Medium Table (32x39)
17" FS740 Monitor (CPQ-013)
Dummy Shell
Keyboard and Mouse

Two Table Store



Small Table (32x34)
15" MV540 Monitor (CPQ-010)
Keyboard and Mouse



Medium Table (32x39)
17" FS740 Monitor (CPQ-013)
Dummy Shell
Keyboard and Mouse

Pricing Signs



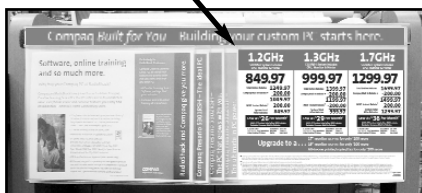
CLS Pricing Sign

One Table Stores: Place the "Creative Learning Series (CLS)" pricing sign in the tablefront sign holder as shown in picture A. Place the "Built For You (BFY)" promotional sign behind the CLS pricing sign for reference.

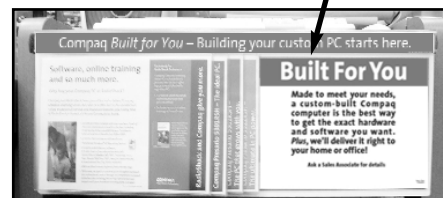
Two Table Stores: Place the CLS pricing sign in the tablefront sign holder on the small table (see picture A). Place the BFY promotional sign in the tablefront sign holder on the medium table (see picture B).



BFY Pricing Sign



Picture A



Picture B

"No Interest Until 2003" Credit Offer sign: Replace the "No Interest for 12 Months" credit offer sign with the new "No Interest Until 2003" credit offer sign.

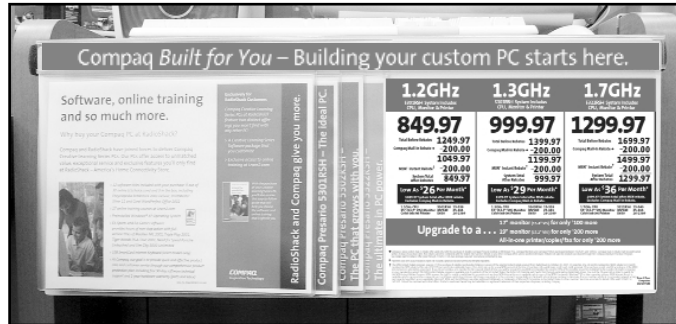


COMPAQ

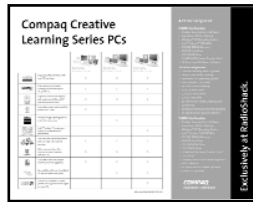
3C Refresh Oct. 24th

Tablefront Signs

Remove all current tablefront signs (**except the new pricing signs you just inserted**). The tablefront signs should be placed in the order below starting with the front side of the first insert as shown below.



Front Side of Insert One
"Give You More"
Tablefront Sign
CPQ-992



Back Side of Insert One
"Exclusively at RS"
Tablefront Sign
CPQ-991



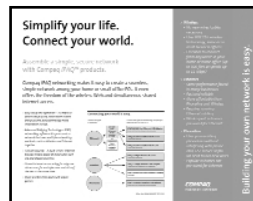
Front Side of Insert Two
"Presario 5301"
Tablefront Sign
CPQ-993



Back Side of Insert Two
"Compaq Connects
Your World"
Tablefront Sign
CPQ-994



Front of Insert Three
"Presario 5302"
Tablefront Sign
CPQ-995



Back of Insert Three
"Building Your Own
Network is Easier"
Tablefront Sign
CPQ-996



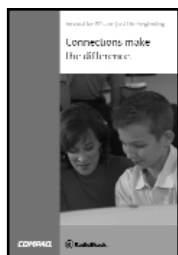
Front of Insert Four
"Order Compaq
Products Here"
Tablefront Sign
CPQ-998



Back of Insert Four
"Presario 5322"
Tablefront Sign
CPQ-997

Compaq Built for You - Building your custom PC starts here.

"Built For You" Channel Strip CPQ-1040



Dispose of the current CLS brochures (CPQ-1001)

Place the new brochures (CPQ-971) on each table in the brochure holder. If you need a replacement brochure holder contact Circulation.



COMPAQ

3C Refresh Oct. 24th

Demo CD Installation

Getting Started:

Step 1: You must manually uninstall the Compaq 2C demo.

- Double-click on "My Computer," then double-click on the "C Drive" icon.
- From the C Drive, find the "CLS Demo" folder.
- Double-click on the "CLS Demo" folder and double-click on the "un-install" icon.
- Restart the machine before you install the new demo.

Step 2: Disabling Sleep Mode. *This step is very important if you do not disable the Sleep Mode the Demo will not run properly.*

- Before installing the demo, please verify the sleep mode is disabled. Refer to the Demo CD instructions under the "Troubleshooting" section.

Step 3: Installing the new demo is simple! Just follow the instructions below to get started.

- Insert the "3C01 Demo CD" into the CD-ROM drive, label-up.
- The CD-ROM should auto-start the installation program. If it does not auto-start, go to "Run" in the Start Menu. Type: D:\Start.exe (where D: is your CD drive).
- Installation will take a few minutes. Follow the installation prompts. Use the default settings when asked. If prompted to overwrite files, always select "YES."

Step 4: Set Demo Properties: before installation is complete, you will be prompted to set the properties of the demo. This aspect of the setup is detailed below.

-Set Properties Box: The following outline describes the properties you will be able to adjust. Once you are in the demo you will be able to change any of the properties below using your password (which should be set as your stores six digit store number).

-Previous Computer Models: If you still have past Compaq Presario computers in stock, you will be able to include the features of those models with the new products on the demo. If you do not have certain products in stock, you can adjust the list by selecting only those products that are available.

-Printing: You can enable or disable printing. A printer must be attached for printing.

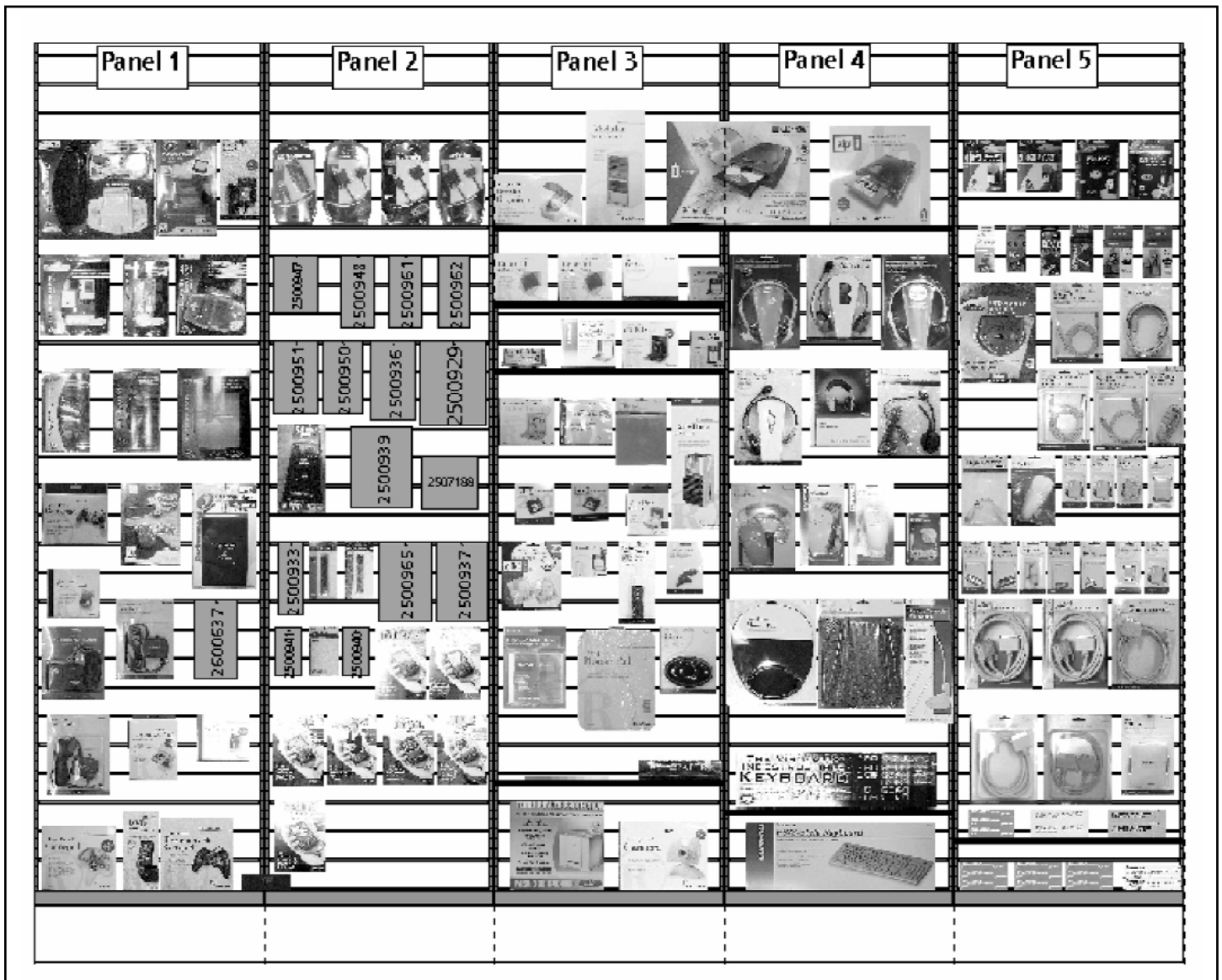
-Set New Password: This function will allow you to set the demo password. This password can be changed at any time. When you choose a password and enter it into both fields in the "Properties Box," press "SET." A message box will pop up to verify your password. Press "OK" in the message box if you accept. Once your password is set and you have entered the demo, you will be prompted to enter your password to access the following: Exit to Desktop and Set Demo Properties.

To Exit the demo, click THREE times on the "Q" of the Compaq logo located in the lower left hand corner.

COMPAQ

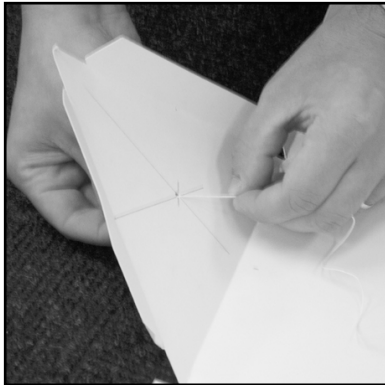
Planograms

The October Store Display guide showed the new Compaq planograms. You should have received the planograms in the September 25th All Store Mailing. These planograms include the new Handheld PC/PDA and Gaming accessories. In order to make room for these new accessories, we pulled the inkjet cartridges from the High Volume Compaq planogram (51118). We were able to make room in the planogram for the best selling **Inkjet Cartridges** (refer to Panel 5 of the planogram below). You can order the Compaq planograms (51118 High Volume Compaq, 51117 Low Volume Compaq) from FaxBack 1-800-323-6586.

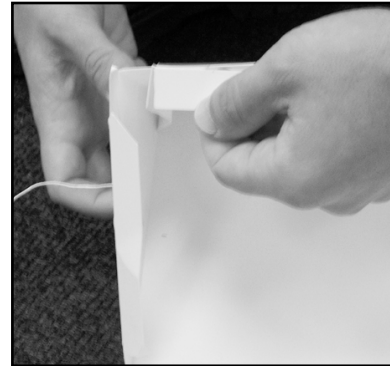


Pictured above planogram 51118.

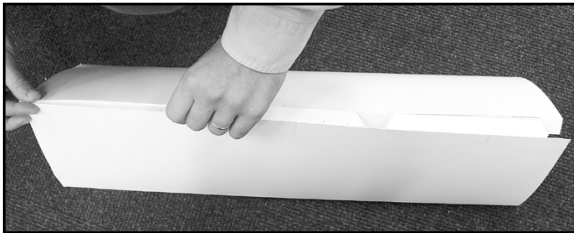
Inkjet Trifold Assembly



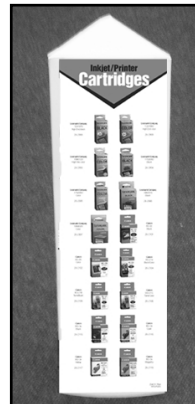
Step 1: Run the string through the hole in the center of the triangle top.



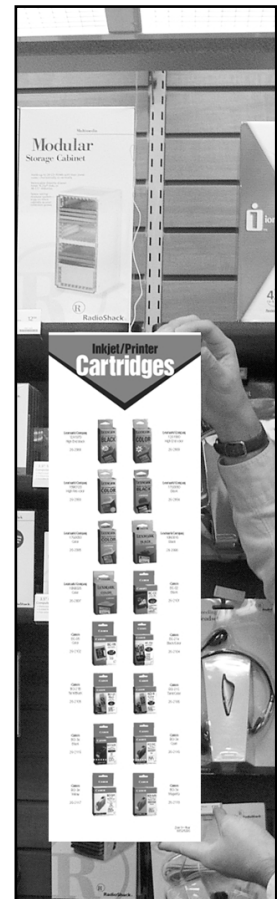
Step 2: Connect the top to the sides by inserting the tabs on the top of each side to the triangle top.



Step 3: Connect the sides together by inserting the tabs into the three slots.



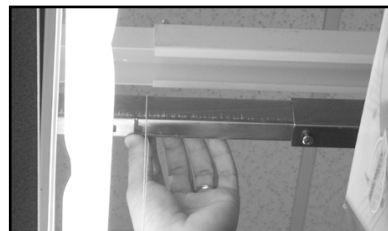
Spinner Complete



Step 6: The spinner should hang directly in front of the products on the Compaq wall without completely blocking the products on the wall.



Step 4: Pull the string over the support for the Compaq canopy closest to where the Inkjet cartridges are displayed.



Step 5: Tie a knot in the string just under the canopy support. Be sure that the string is pulled out as close to the light as possible without it touching the light.

Home Networking

In the October Store Display guide you were instructed to setup a Home Networking section. You should have a 4ft section next to Compaq if you have the Linksys networking hardware (as shown below). **If you do not have the Linksys products, then you should have a 2ft section. Therefore, you will need to dispose of the Home Networking POP.**



Home Networking Canopy Sign: Place the Home Networking canopy sign above the four foot section. Attach the adhesive portion of the sign to the top side of the canopy.



Ethernet (18x2) Shelf Talker: Place the ethernet shelf talker under the (250-3021) PCMCIA 10/100 Adapter.



Wireless (18x2) Shelf Talker: Place the wireless shelf talker under the (250-3022) 802.11B USB Adapter.



Home Plug (18x2) Shelf Talker: Place the Home Plug shelf talker in a safe location until you receive the Home Plug networking hardware. These products should be in stock by ????.

These shelf talkers should help you and your customers distinguish between the different types of networking hardware.

Home Networking



RadioShack Networking Configurator

Don't forget about this helpful tool available on RadioShack.com. The Networking Configurator will help you increase networking sales by properly qualifying your customers and pinpointing their networking needs. Just log on to <http://broadband.linksys.com/radioshack.asp> or go to RadioShack.com, find the *Product Catalog* area then click on the *Computer* category. On the Computer product page, click the area on the right of the screen entitled **FREE NETWORK ADVICE**.